



REF: # 12828

PILAR DE LA HORADADA



INFO

:	355.900 €
:	
:	Pilar De La Horadada
:	3
:	2
(m2):	101
(m2):	77
(m2):	126
:	
:	-
:	-



Exclusive New Build Bungalows in Pilar de la Horadada - Privileged Location A Unique Residential to Enjoy the Mediterranean Welcome to this exclusive development of 16 bungalows and one corner townhouse with 2 and 3 bedrooms, designed for those looking for quality of life and comfort on the Costa Blanca. Located just a short walk from the centre of Pilar de la Horadada, this modern complex offers a tranquil setting, with all amenities within easy reach. The homes are designed to maximise the wellbeing of their owners: Ground floors with front garden and rear patio. Top floors with private terrace and solarium with spectacular views. A corner townhouse, with more space and privacy. The residential has a large communal swimming pool surrounded by green areas, ideal for relaxing under the Mediterranean sun. Modern Design and High Quality Finishes Each property has been carefully designed to offer luminosity, functionality and contemporary style. Armoured front door for added security. Open concept kitchen, integrated into the living room for convenience. Modern bathrooms with shower trays and installation of tempered glass screens. Pre-installation of air conditioning in living room and bedrooms. Hot water production by individual fan heater for greater energy efficiency. Upper floors with pre-installation of outdoor kitchen in the solariums. In addition, the development has a parking area for bicycles and a private parking space per property. Pilar de la Horadada - A Place to Live All Year Round Located in the province of Alicante, Pilar

de la Horadada is an ideal destination for those looking to combine tranquillity, nature and first class services. Its beautiful beaches, such as Playa de las Higuericas, are just a few minutes away, offering golden sand crystal clear Mediterranean waters. This development enjoys an unbeatable location, with access to supermarkets, shops, restaurants and leisure facilities all within walking distance. The area also boasts hiking trails, cycle paths and a wide range of sports facilities. Key Distances to Main Points of Interest Torre de la Horadada Beach - 3 km (5 min drive). Lo Romero Golf Course - 5 km (10 min drive). La Zenia Boulevard Shopping Centre - 15 km (15 min drive). Corvera Airport (Murcia) - 40 km (40 min drive). Alicante Airport - 55 km (55 min drive). Reserve your Costa Blanca Property Today Don't miss the opportunity to purchase a brand new property in an unbeatable location. Contact us today for more information and to arrange a viewing.



•

•















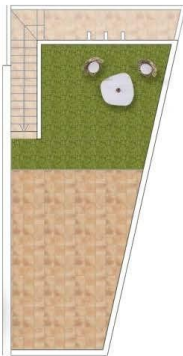




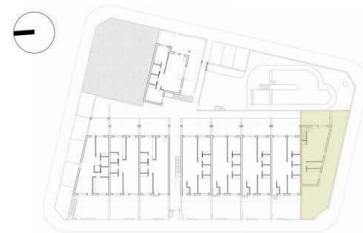
Planta baja / Ground floor



Planta primera / First floor



Planta solarium / Topfloor



VIVIENDA DUPLEX - A:
SUPERFICIE ÚTIL

Salón- Comedor- Cocina.....	31,73 m ²
Dormitorio 1.....	10,51 m ²
Dormitorio 2.....	11,25 m ²
Baño 1.....	4,58 m ²
Baño 2.....	3,96 m ²
Sala de estar.....	15,14 m ²
Distribuidor 1.....	1,25 m ²
Distribuidor 2.....	1,25 m ²

TOTAL SUPERFICIE ÚTIL..... 79,67 m²

Terraza planta baja.....87,85 m²

Terraza planta primera.....5,10 m²

Solarium.....44,86 m²

SUPERFICIE CONSTRUIDA.....101,15 m²

NOTA:

Las plantas quedan sujetas a posibles modificaciones de carácter técnico, en función del desarrollo del proyecto y de la obra, según indicaciones de la dirección facultativa. El ambiente interior reflejado tiene únicamente carácter decorativo. Los dimensionamientos que se representan en esta planta y en su leyenda son aproximados; los definitivos serán los que resulten de la ejecución de la obra, de forma que se entregue la obra con el mobiliario y electrodomésticos que consten en la memoria de cálculo. El mobiliario de la cocina y la disposición de los armarios pueden sufrir ligeros variaciones en función del montaje definitivo.

* NOTA: zona común, previsto ascensor



Planta baja / Ground floor

NOTA:
Los planos quedan sujetos a posibles modificaciones de carácter técnico, en función del desarrollo del proyecto y de la obra, según indicaciones de la dirección facultativa. El amueblamiento reflejado tiene únicamente efectos decorativos, las dimensiones que se representan en este plano y en su leyenda son aproximadas, las definitivas serán las que resulten de la ejecución de la obra. Se hace entrega de la obra solo con el mobiliario y electrodomésticos que se indican en la memoria de cantidades. El mobiliario de la cocina y la disposición de los sanitarios puede sufrir ligeras variaciones en función del montaje definitivo.

"OUR EXPERIENCE IS YOUR GUARANTEE"