



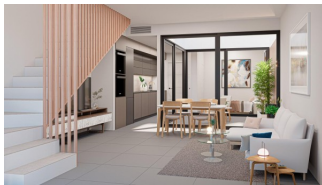
REF: # 12733

SAN PEDRO DEL PINATAR



INFO

:	305.000 €
:	
:	San Pedro Del Pinatar
:	3
:	2
(m2):	100
(m2):	91
(m2):	40
:	
:	-
:	-



New Construction Townhouses in San Pedro del Pinatar Luxury Townhouses Near the Mediterranean and Mar Menor Discover this new development in San Pedro del Pinatar, Murcia, offering a prime location surrounded by essential services, sports facilities, golf courses, and stunning beaches. Located just 5 minutes from the Mediterranean Sea and the tranquil shores of the Mar Menor, this exclusive complex features three luxury townhouses designed for comfort and style. Modern Homes with Premium Features Each townhouse boasts three bedrooms, two bathrooms, a private swimming pool, a spacious terrace, an interior patio, a rooftop solarium, and private parking. The properties are equipped with modern kitchens and bathrooms, pre-installed air conditioning, and high-quality finishes. Additional highlights include: Aluminum exterior carpentry with hermetically sealed sliding doors and thermal aluminum blinds or interior curtains. Built-in wardrobes with textile-style interiors and drawers in all bedrooms. Wall-mounted toilets with concealed cisterns and designer furniture with porcelain sinks and mirrors. Transparent safety glass shower screens in both bathrooms. LED lighting throughout the home, including the kitchen, living room, hallway, and bathrooms, as well as outdoor LED fixtures on facades, garden walls, and the solarium. A fully equipped kitchen with Balay appliances or equivalent, including a refrigerator, ceramic hob, oven, microwave, extractor hood, and integrated dishwasher. A private

swimming pool with a stainless-steel shower, LED lighting, and complete purification system. Prime Location with Excellent Connectivity San Pedro del Pinatar is a vibrant coastal town known for its natural mud baths, serene beaches, and water sports opportunities. It offers easy access to all amenities, including the Dos Mares Shopping Center, which is just 5 minutes away. The area is also a haven for golf enthusiasts, with several courses nearby. Key distances: Murcia/Corvera Airport: 30 minutes (approximately 35 km). Alicante Airport: 1 hour (approximately 80 km). Dos Mares Shopping Center: 5 minutes (approximately 3 km). Lo Romero Golf Course: 15 minutes (approximately 12 km). Marina and sailing clubs: 10 minutes (approximately 7 km). Experience Coastal Living at Its Best With its strategic location, modern design, and luxurious features, these townhouses are the perfect blend of comfort and convenience. Don't miss this opportunity to own a dream home in San Pedro del Pinatar. Contact us today to schedule a viewing!



:

:

: •

EXTRA

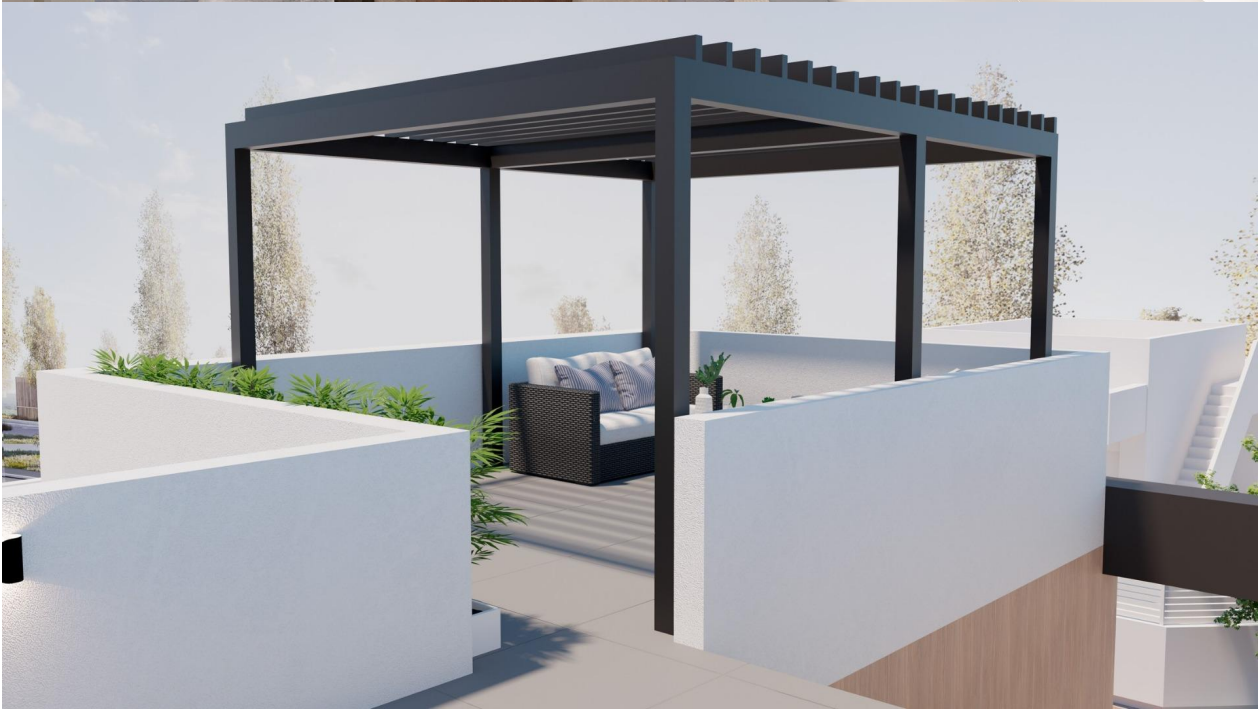
•















Planta baja



Primera Planta



Solarium



S. Parcela: 91 M2
S. Vivienda: 100 M2
S. Solárium: 40 M2
S. Piscina: 7,2 M2

"OUR EXPERIENCE IS YOUR GUARANTEE"