



REF: # 12697

LA MANGA DEL MAR MENOR



INFO

:	455.000 €
:	
:	La Manga Del Mar Menor
:	2
:	2
( m2 ):	92
( m2 ):	440
( m2 ):	86
:	
:	-
:	-



**NEW BUILT VILLA IN PLAYA HONDA** Villa with basement, garage, private pool and solarium, fully finished and ready to move into. Located on a plot of more than 400 m2 and 1 km from the Mar Menor beach in Playa Honda, with all services around. Close to the famous La Manga golf course and the Calblanque natural park.



•

•































PLANTA BAJA

#### CUADRO DE SUPERFICIES SUPERFICIES ÚTILES

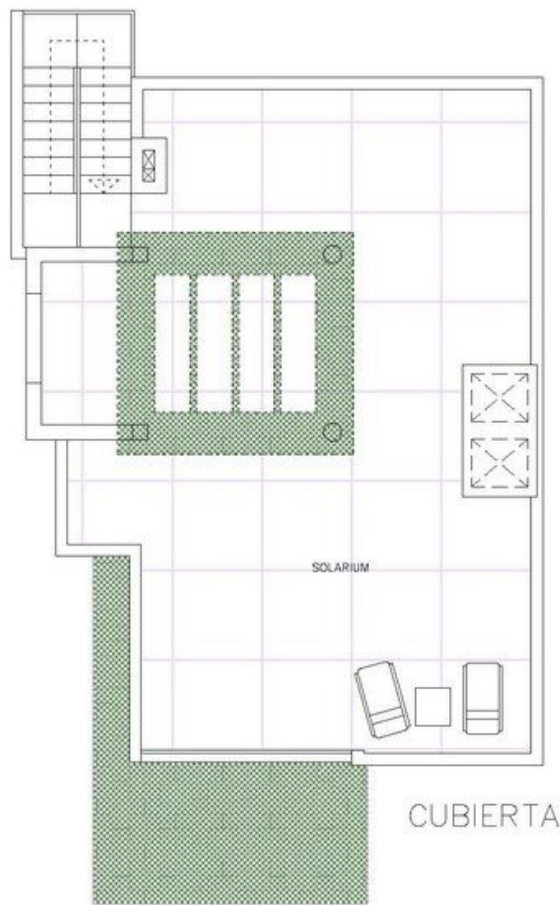
ESTAR-COMEDOR-COCINA	= 43,20 m <sup>2</sup>
DORMITORIO 1 (D1)	= 13,35 m <sup>2</sup>
BAÑO (B1)	= 4,25 m <sup>2</sup>
DORMITORIO 2 (D2)	= 9,00 m <sup>2</sup>
BAÑO 2 (B2)	= 4,40 m <sup>2</sup>

PLANTA BAJA  
ESCALA: 1/100

## 2 DORMITORIOS

#### CUADRO DE SUPERFICIES SUPERFICIES CONSTRUIDAS

SUP. TOTAL ÚTIL PLANTA BAJA	= 74,20 m <sup>2</sup>
TOTAL CONSTRUIDA VIVIENDA	= 87,00 m <sup>2</sup>
50% PORCHES CUBIERTOS	= 5,00 m <sup>2</sup>
TOTAL CONSTRUIDA	= 92,00 m <sup>2</sup>
TOTAL CONSTRUIDA PISCINA	= 32,00 m <sup>2</sup>
SOLARIUM	= 76,00 m <sup>2</sup>



#### CUADRO DE SUPERFICIES SUPERFICIES ÚTILES

ESTAR-COMEDOR-COCINA	= 43,20 m <sup>2</sup>
DORMITORIO 1 (D1)	= 13,35 m <sup>2</sup>
BAÑO (B1)	= 4,25 m <sup>2</sup>
DORMITORIO 2 (D2)	= 9,00 m <sup>2</sup>
BAÑO 2 (B2)	= 4,40 m <sup>2</sup>

PLANTA CUBIERTA  
ESCALA: 1/100

**2 DORMITORIOS**

#### CUADRO DE SUPERFICIES SUPERFICIES CONSTRUIDAS

SUP. TOTAL ÚTIL PLANTA BAJA	= 74,20 m <sup>2</sup>
TOTAL CONSTRUIDA VIVIENDA	= 87,00 m <sup>2</sup>
50% PORCHES CUBIERTOS	= 5,00 m <sup>2</sup>
TOTAL CONSTUIDA	= 92,00 m <sup>2</sup>
TOTAL CONSTRUIDA PISCINA	= 32,00 m <sup>2</sup>
SOLARIUM	= 76,00 m <sup>2</sup>

**"OUR EXPERIENCE IS YOUR GUARANTEE"**