



REF: # 12689

TORREVIEJA



INFO

: 319.000 €

:

: Torrevieja

: 3

: 2

( m2 ): 98

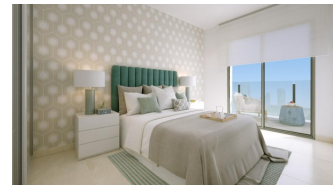
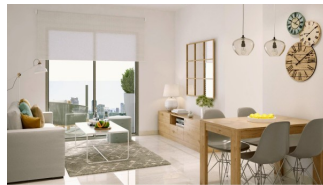
( m2 ): -

( m2 ): 8

:

: -

-

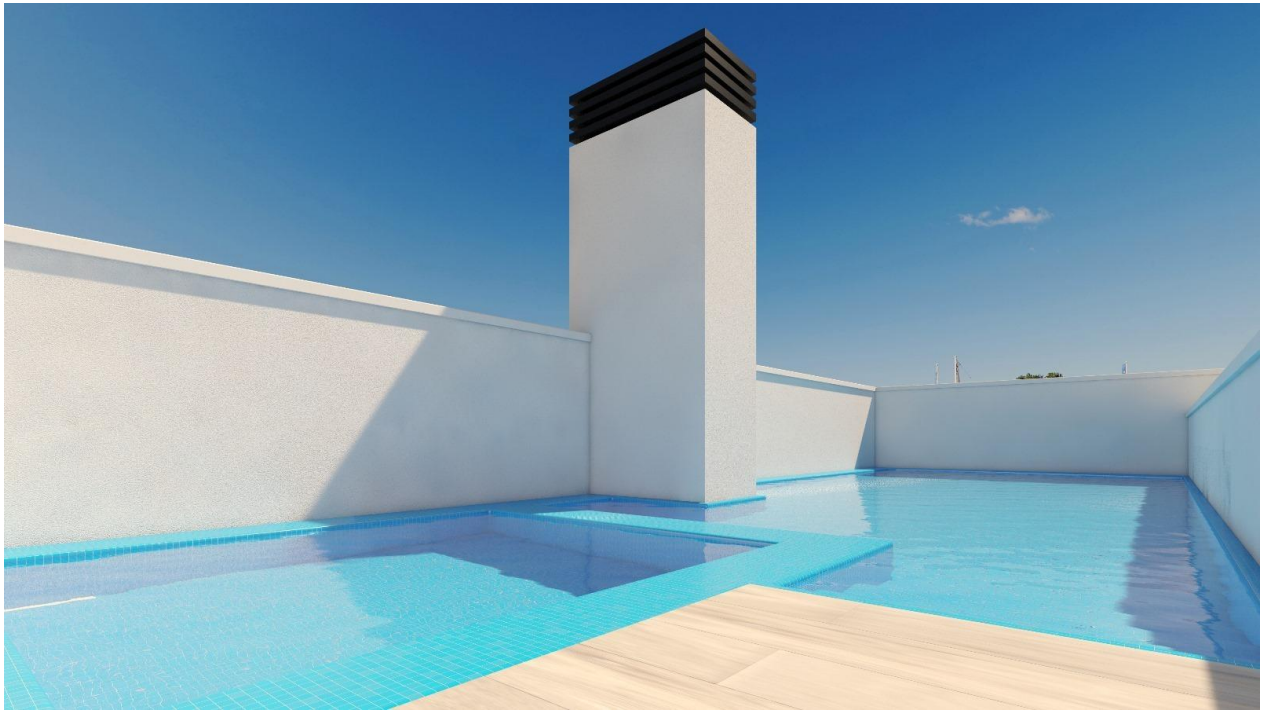


New Build Apartments in Torrevieja, Just 150m from Playa del Cura  
Prime Location in Torrevieja, Close to Beaches and Amenities  
Experience coastal living at its best with these brand-new apartments and penthouses in Torrevieja, located a mere 150 meters from Playa del Cura. These exclusive residences are nestled in a vibrant neighborhood with all essential amenities within reach, including shops, restaurants, and cafes. Perfectly positioned on Spain's Costa Blanca, Torrevieja offers residents a Mediterranean climate and relaxed lifestyle with easy access to both Alicante Airport (45 km) and Murcia Airport (65 km).  
Modern Design with Spacious Layouts and Quality Finishes This new residential complex consists of 12 luxurious apartments and penthouses, offering 2 and 3-bedroom units designed for modern comfort. Each unit features an open-plan American-style kitchen that seamlessly flows into the living room, creating an ideal space for relaxation and entertainment. Bedrooms include fitted wardrobes with drawers, while bathrooms boast underfloor heating, high-quality fixtures, and shower enclosures. Large, double-glazed windows with thermal and acoustic insulation provide a quiet, temperature-controlled living environment, ensuring your home is a

peaceful retreat. Premium Exterior and Energy-Efficient Features Built with energy efficiency in mind, these apartments come with high-quality aluminum exterior carpentry with thermal break technology and automatic motorized shutters. Each unit is pre-installed for climate control through ducted air conditioning and heating, ensuring year-round comfort. For added security, all entrance doors are armored with secure locks, and interior doors are finished in white lacquer. Additionally, each unit is fitted with an energy-saving aerothermal system for hot water, which significantly reduces energy consumption. Exclusive Rooftop Solarium with Pool Residents of this modern complex can enjoy exclusive access to a beautiful rooftop solarium with a communal swimming pool, ideal for soaking up the sun and enjoying panoramic views of Torrevieja. The building's rooftop offers a serene escape and is the perfect place to relax with family or friends. Living in Torrevieja: A Blend of Culture and Nature Torrevieja is known for its scenic coastline, beautiful beaches, and unique salt lagoons. The town's popular seafront promenades and the charming Museo del Mar y de la Sal reflect its fishing and salt-mining history. Just a short drive away, the Natural Park of Las Lagunas de La Mata-Torrevieja offers picturesque trails and two stunning saltwater lagoons, one pink and one green, for nature enthusiasts to explore. Start Your Coastal Life Today Don't miss the chance to own a stylish new home in this exceptional location. Contact us today to schedule a viewing and discover everything these exclusive apartments in Torrevieja have to offer!

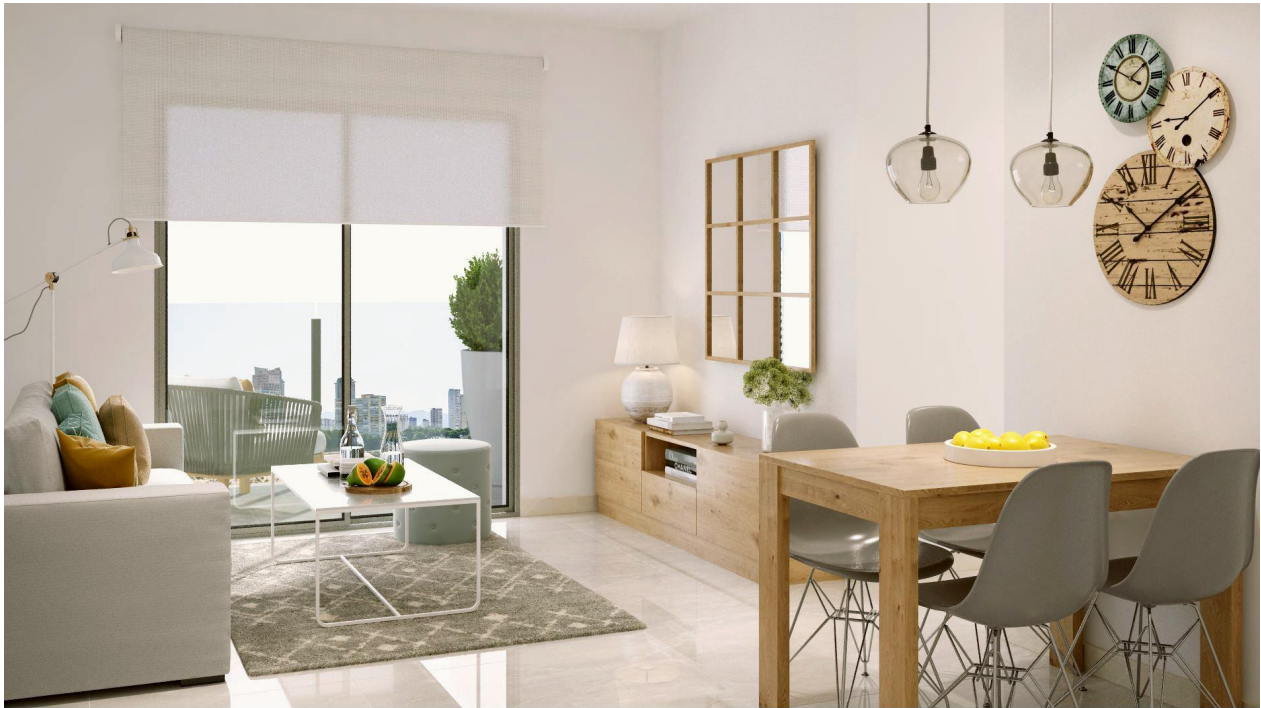


-























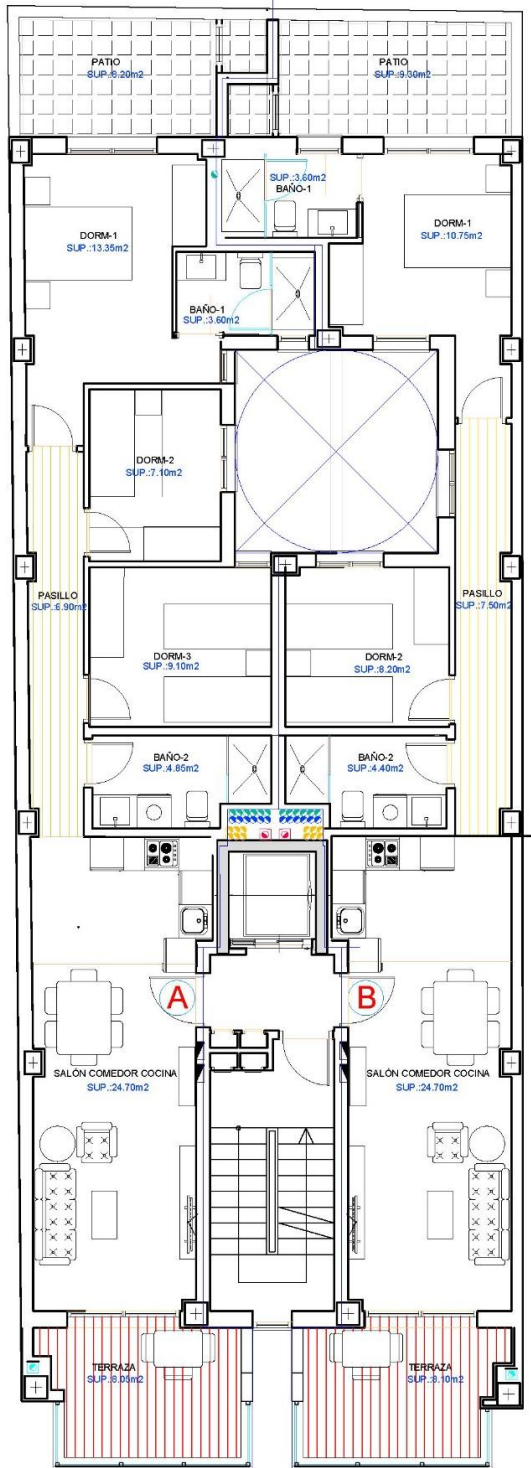




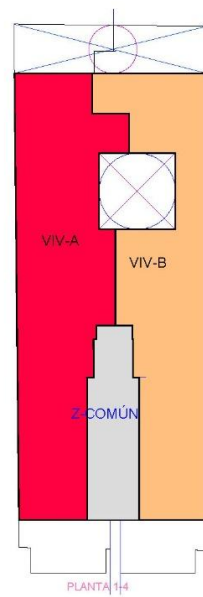






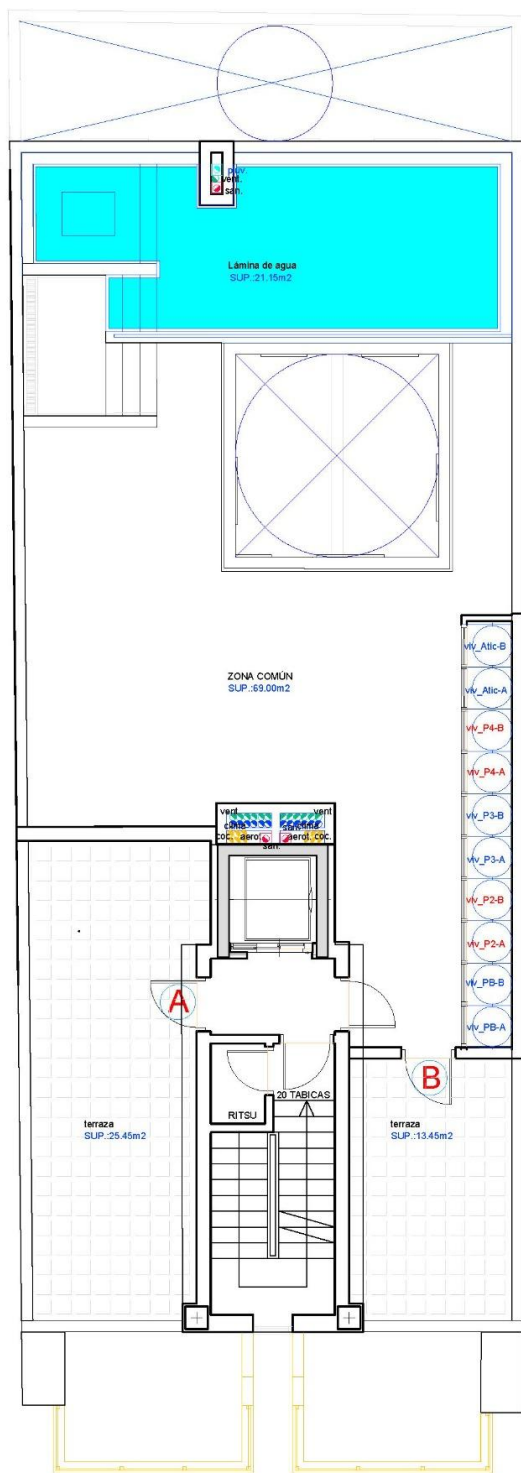


CUADRO DE SUPERFICIES SUPERFICIE VIVIENDA TIPO (PLANTA 1)		
	VIV-A	VIV-B
SALÓN COMEDOR	24,70 m <sup>2</sup>	24,70 m <sup>2</sup>
PASILLO	6,90 m <sup>2</sup>	7,50 m <sup>2</sup>
BAÑO-1	3,60 m <sup>2</sup>	3,60 m <sup>2</sup>
DORMITORIO-1	13,35 m <sup>2</sup>	10,75 m <sup>2</sup>
DORMITORIO-2	7,10 m <sup>2</sup>	8,20 m <sup>2</sup>
DORMITORIO-3	9,10 m <sup>2</sup>	0,00 m <sup>2</sup>
BAÑO-2	4,85 m <sup>2</sup>	4,40 m <sup>2</sup>
SUP. GALERIA/PATIO	0,00 m <sup>2</sup>	0,00 m <sup>2</sup>
SUP. TERRAZA-1	8,05 m <sup>2</sup>	8,10 m <sup>2</sup>
PATIO TRASERO	8,20 m <sup>2</sup>	9,30 m <sup>2</sup>
<b>SUP. ÚTIL VIVIENDA</b>	<b>85,85 m<sup>2</sup></b>	<b>76,55 m<sup>2</sup></b>
<b>SUP. CONSTR. VIVIENDA (sin E.Comunes, terrazas 100%)</b>	<b>98,43 m<sup>2</sup></b>	<b>87,98 m<sup>2</sup></b>
<b>SUP. CONSTRUIDA COMUNES</b>	<b>11,89 m<sup>2</sup></b>	<b>11,89 m<sup>2</sup></b>
<b>SUPERFICIE CONSTRUIDA TOTAL</b>	<b>110,32 m<sup>2</sup></b>	<b>99,87 m<sup>2</sup></b>



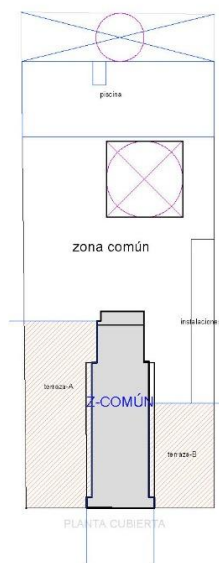
**PLANTA 1**





PLANTA CUBIERTA

CUADRO DE SUPERFICIES SUPERFICIE VIVIENDA TIPO (ATICO)		
	VIV-A	VIV-B
SALON COMEDOR	24,70 m2	24,70 m2
PASILLO	6,90 m2	7,50 m2
BAÑO-1	3,60 m2	3,60 m2
DORMITORIO-1	13,35 m2	10,75 m2
DORMITORIO-2	7,10 m2	8,20 m2
DORMITORIO-3	9,10 m2	0,00 m2
BAÑO-2	4,85 m2	4,40 m2
SUP. GALERIA/PATIO	0,00 m2	0,00 m2
SUP. TERRAZA-1	8,05 m2	8,10 m2
SUP. TERRAZA-2	25,45 m2	13,45 m2
<b>SUP. ÚTIL VIVIENDA</b>	<b>103,10 m2</b>	<b>80,70 m2</b>
<b>SUP. CONSTR. VIVIENDA (sin E.Comunes, terrazas 100%)</b>	<b>116,73 m2</b>	<b>103,08 m2</b>
<b>SUP. CONSTRUIDA COMUNES</b>	<b>11,89 m2</b>	<b>10,31 m2</b>
<b>SUPERFICIE CONSTRUIDA TOTAL</b>	<b>128,62 m2</b>	<b>113,39 m2</b>



PLANTA CUBIERTA

PLANTA CUBIERTAS













***"OUR EXPERIENCE IS YOUR GUARANTEE"***