



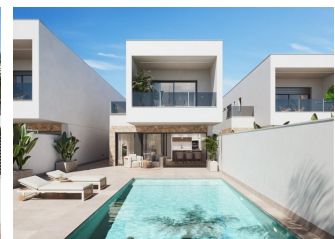
REF: # 12670

SAN PEDRO DEL PINATAR (LOS ANTOLINOS)



INFO

:	395.000 €
:	
:	San Pedro Del Pinatar (Los Antolinos)
:	3
:	3
(m2):	112
(m2):	162
(m2):	25
:	
:	-
:	-



Modern New Build Villas in San Pedro del Pinatar with Private Pool
Elegant Design and Premium Quality Welcome to the second phase of an exclusive development in San Pedro del Pinatar, where modernity meets functionality. These 12 semi-detached villas are crafted with a minimalist design and high-quality finishes, offering a sophisticated and stylish living experience. Each villa features 3 spacious bedrooms, 3 bathrooms, and a private pool, along with terraces and a private garden. This is the perfect sanctuary for those seeking tranquility, privacy, and unparalleled comfort. Thoughtfully Designed Homes for Modern Living These new-build villas boast an open-plan kitchen connected to a bright living area, creating a seamless space for family living and entertaining. Key features include: 3 bedrooms with built-in wardrobes. 3 bathrooms with transparent glass shower screens for a sleek look. Private pool and garden, perfect for relaxing outdoors. First-floor terraces and an optional rooftop solarium for sunbathing. Parking space on the plot. Large windows in the living room provide direct access to the pool area, flooding the interior with natural light. Energy-efficient additions like solar

panels and pre-installed ducted air conditioning ensure modern comfort and sustainability. Included appliances by Balay (induction hob, oven, microwave, extractor, refrigerator, integrated dishwasher, and washing machine) make moving in effortless. Prime Location in San Pedro del Pinatar Located on the beautiful Mar Menor and Mediterranean coast, San Pedro del Pinatar is a dream destination for water sports enthusiasts and beach lovers. The area is renowned for its serene beaches, natural mud baths, and vibrant marina, offering year-round activities in a mild climate. Points of interest near these villas include: Dos Mares Shopping Center: 5 km (5 minutes by car). Murcia-Corvera Airport: 30 km (30 minutes by car). Alicante Airport: 80 km (1 hour by car). Local golf courses: Various options within 10–15 km. Lo Pagán beaches: Just a short 3 km drive away. The neighborhood is well-served by schools, sports facilities, shops, and public transport, making it ideal for families and retirees alike. Discover Your Dream Home Today Don't miss the chance to own one of these exclusive villas in a thriving community. Experience the best of coastal living and make San Pedro del Pinatar your new home. Contact us now to schedule a viewing and secure your piece of paradise!

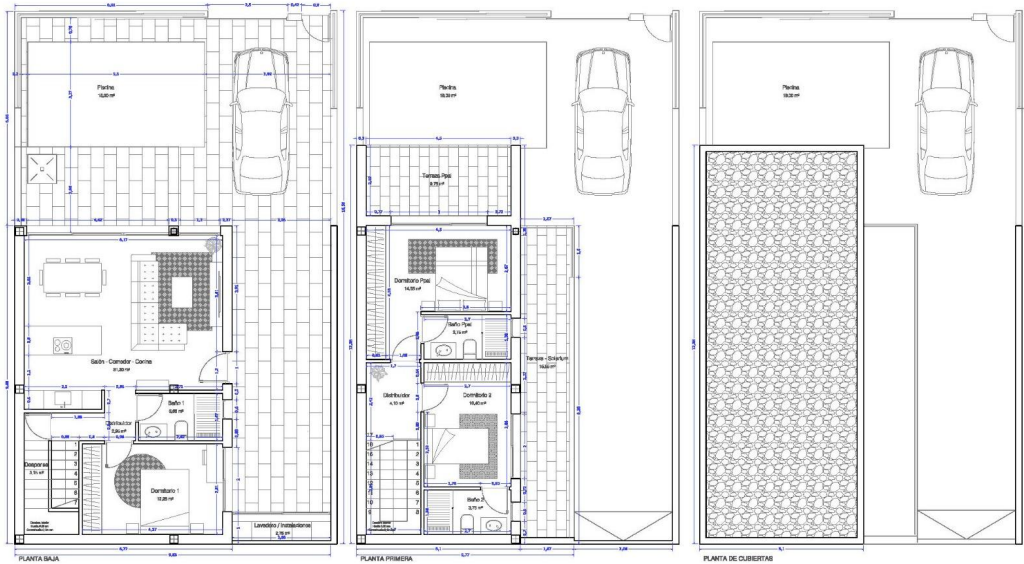
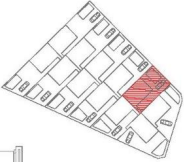


•

•







VIVIENDA 5	
CUADRO DE SUP. CONSTRUIDAS	
SUP. CONSTRUIDA PLANTA BAJA	66,90 m²
SUP. CONSTRUIDA PLANTA PRIMERA	48,60 m²
SUPERFICIE CONSTRUIDA TOTAL SUP. CONTRUIDA	115,50 m²
CUADRO DE SUP. UTILES	
PLANTA BAJA	
SALÓN/COMEDOR/COCINA	31,20 m²
DORMITORIO 1	12,25 m²
BANO	3,85 m²
DISTRIBUIDOR	2,85 m²
PLANTA PRIMERA	
DORMITORIO PPAL	14,55 m²
BANO PPAL	3,75 m²
DORMITORIO 2	10,40 m²
BANO 2	3,75 m²
DISTRIBUIDOR	4,10 m²
ESCALERA	4,95 m²
TOTAL	93,95 m²
CUADRO DE SUP. EXTERIORES	
JARDÍN	75,03 m²
PISCINA	18,00 m²
LAVADERO/INSTALACIONES	2,75 m²
TERRAZA - SOLARIUM P1	15,65 m²
TERRAZA PPAL P1	9,75 m²
TOTAL	121,18 m²
SUPERFICIE DE PARCELA	
SUPERFICIE TOTAL DE PARCELA	163,68 m²



"OUR EXPERIENCE IS YOUR GUARANTEE"