



REF: # 12492

LOS ALCAZARES (SERENA GOLF)



INFO

:	559.900 €
:	
:	Los Alcazares (Serena Golf)
:	3
:	2
(m2):	220
(m2):	296
(m2):	40
:	
:	-
:	-



New Build Villas and Apartments in Los Alcázares Discover a new residential complex in Los Alcázares, Murcia, featuring 16 modern apartments and penthouses with 2 or 3 bedrooms, alongside 8 exclusive villas. This development perfectly blends contemporary design, high quality, and functionality. Its unbeatable location offers stunning views of La Serena Golf and the Mar Menor. Luxurious Villas with Modern Amenities The villas include 3 spacious bedrooms, 2 bathrooms, an open-plan kitchen integrated with the living room, fitted wardrobes, a large terrace, a private pool, and a parking space. Some units also feature a basement, and a solarium is available as an option. Prime Location by La Serena Golf Course Located in the heart of the prestigious La Serena Golf course, known for its unique combination of lakes and lush greenery, the residential area offers a tranquil lifestyle. The golf course's strategic design incorporates water features in 16 of its 18 holes, providing a challenging yet enjoyable experience for golfers. Uniquely, the course is within walking distance of Los Alcázares town center, offering the perfect balance of peace and accessibility to local services. Nearby Points of Interest La Serena Golf: 0 km Mar Menor Beach: 1 km Murcia Airport: 25 km Cartagena: 21 km Local Shopping Center: 4 km Alicante Airport: 55 km



•

•





















PLOT LAYOUT

PLOT AREAS / SUPERFICIE PARCELAS

P-01.....	413,97 M ²	P-06.....	473,70 M ²
P-02.....	312,13 M ²	P-07.....	359,06 M ²
P-03.....	312,13 M ²	P-08.....	296,58 M ²
P-04.....	312,13 M ²		
P-05.....	312,13 M ²		

Commercial Plans. The information contained in the drawings is subject to variations for technical, commercial or legal reasons. The furnishing included in the drawings is only for information purposes. / Planos comerciales. La información contenida en los planos y memoria de calidades queda sujeta a variaciones por motivos técnicos, comerciales o legales. El amueblamiento que aparece en los planos es meramente informativo.

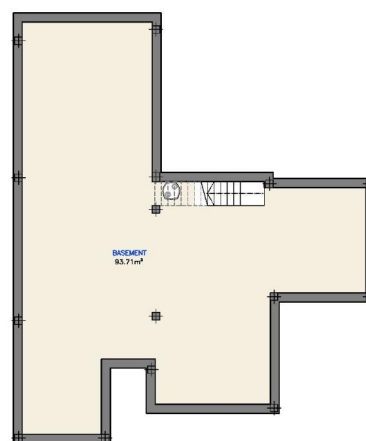
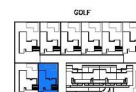
VILLA 8

TOTAL BUILT AREA/
SUP. TOTAL CONSTRUIDA.....220,00 M²

PLOT AREA/
SUP. DE PARCELA.....296,58 M²



GROUND FLOOR



BASEMENT



Commercial Plans. The information contained in the drawings is subject to variations for technical, commercial or legal reasons. The furnishing included in the drawings is only for information purposes. / Planos comerciales. La información contenida en los planos y memoria de calidades queda sujeta a variaciones por motivos técnicos, comerciales o legales. El amueblamiento que aparece en los planos es meramente informativo.

"OUR EXPERIENCE IS YOUR GUARANTEE"