



REF: # 12284

PILAR DE LA HORADADA (TORRE DE LA HORADADA)



INFO

: 2.850.000 €

:

: Pilar De La Horadada (Torre de la Horadada)

: 5

: 5

(m2): 344

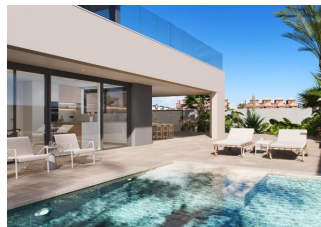
(m2): 618

(m2): 35

:

: -

-



NEW BUILD VILLA IN TORRE DE LA HORADADA Modern New Build villa near Higuercas beach in Torre de la Horadada. The villa consists of a plot of 618 m², with 344 m² constructed. Villa has 5 bedrooms: two of them with complete bathroom and dressing room. Kitchen furnished with top quality materials to be chosen by the owner, including electrical appliances, following an open concept with the dining room surrounded by large windows that provide throughout the day a pleasant light and direct access to the pool and private garden areas completely finished. Air conditioning (hot/cold) by ducts included. Taking care to the smallest detail in the finishes, using the highest quality materials, personalized design and luxury without forgetting the maximum comfort, we achieve the enjoyment of housing both in summer and in the mild winter, making it habitable throughout the year. In addition to a covered garage area for 2 vehicles and parking for another car. Villa located 100m from the Higuercas beach, in Torre de la Horadada, a paradise in all aspects, where you can enjoy the immensity of the Mediterranean Sea, the promenade, refreshing swims in the sea, water sports, sailing, surfing,

snorkelling and just 8 km from Lo Romero Golf, one of the 21 golf courses on the Costa Blanca. 5 minutes from the marina of La Torre de la Horadada and 10 minutes from the marinas of San Pedro del Pinatar, and the best restaurants where you can enjoy the best Mediterranean cuisine. Not forgetting the proximity of the AP7 motorway that connects our residential with two airports with international destinations, 44 km from Corvera and 75km from El Altet, Alicante. The nearest town to the area where the development is located is Pilar de la Horadada, 1 km away, a quiet town with all kinds of services, schools, health centres, police, pharmacies, etc. There are also two commercial areas nearby, the Dos Mares Shopping Centre in San Javier, a 5 minute drive away and La Zenia Boulevard in Orihuela Costa, a 15 minute drive away.

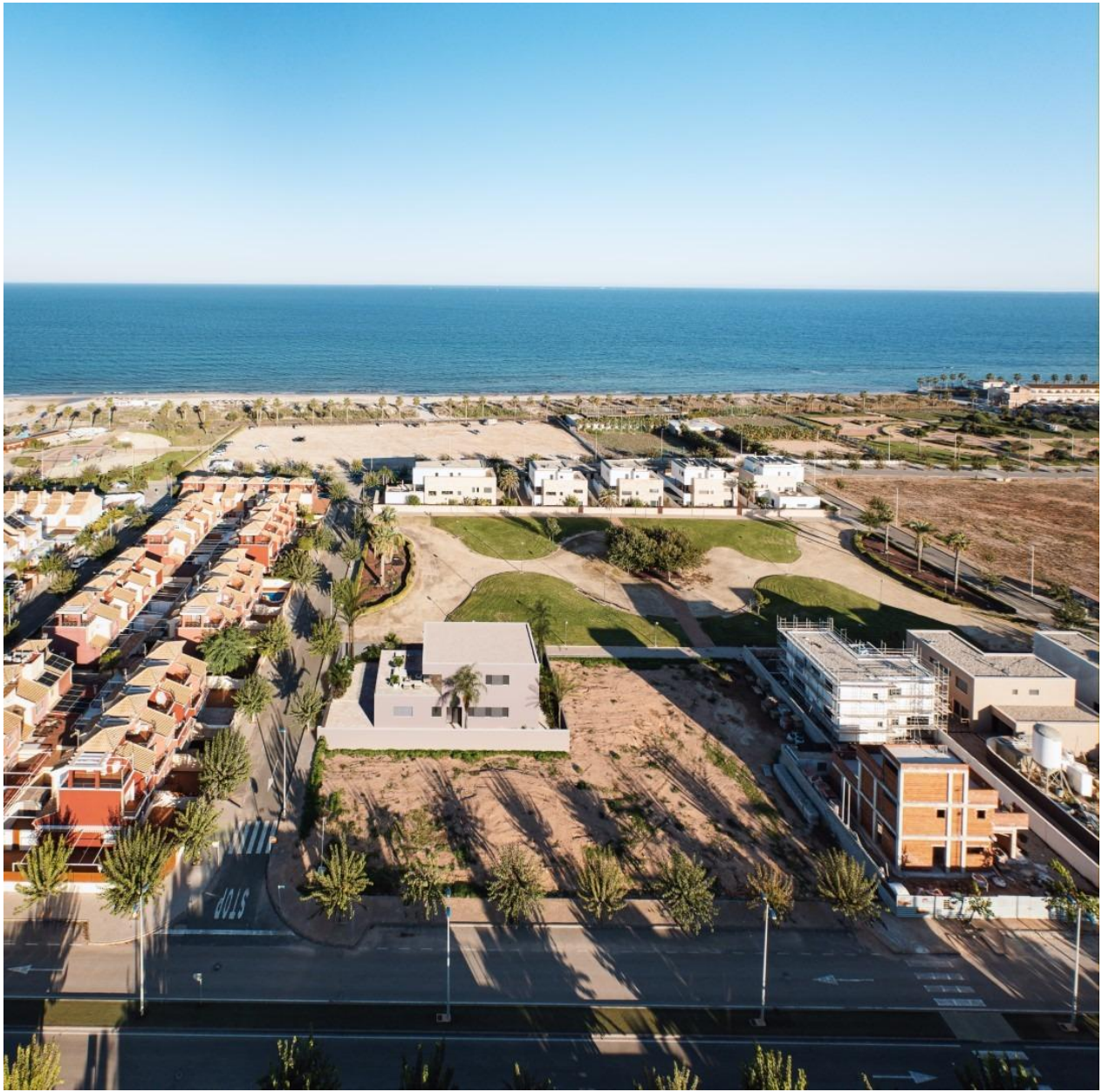














Planta baja

VIVIENDA N°0

SUPERFICIES CONTRUIDAS:

PLANTA BAJA:	166.80 m2
PLANTA PRIMERA:	138.80 m2
GARAJE:	38.90 m2
TOTAL CONSTRUIDA:	344.50 m2
TAMAÑO PISCINA:	10.00 x 4.00
SUPERFICIE PARCELA:	618.25 m2



Planta primera

VIVIENDA N°0

SUPERFICIES CONTRUIDAS:

PLANTA BAJA:	166.80 m2
PLANTA PRIMERA:	138.80 m2
GARAJE:	38.90 m2
TOTAL CONSTRUIDA:	344.50 m2
TAMAÑO PISCINA:	10.00 x 4.00
SUPERFICIE PARCELA:	618.25 m2











"OUR EXPERIENCE IS YOUR GUARANTEE"