



REF: # 11967

TORREVIEJA (LOS BALCONES)



INFO

:	295.900 €
:	
:	Torre Vieja (Los Balcones)
:	3
:	2
(m2):	69
(m2):	-
(m2):	56
:	
:	-
:	-



NEW BUILD RESIDENTIAL OF BUNGALOW APARTMENTS IN LOS BALCONES - Special offer, included in the price, White Goods, A/C, Spotlights and exterior lights, Shower screen in both bathrooms and Pergola for top floors with 2.2Kw solar panels Discover the perfect harmony between luxury and comfort in our ground-floor apartments with a garden or upper-floor apartments featuring a balcony and solarium. The residences consist of 2 bedrooms and 2 bathrooms, with the option of a third bedroom to suit your needs. Each apartment offers spectacular views of the pink lagoon of Torre Vieja, creating a unique experience where nature becomes an integral part of your daily life. The common areas are an extension of your own private oasis. Immerse yourself in our infinity pool while enjoying panoramic views of the pink lagoon, play with the little ones in the playground, or stroll through the landscaped green areas. Strategically nestled, places you minutes away from the beaches of Torre Vieja, the bustling Zenia Boulevard shopping center, and a variety of amenities such as supermarkets, pharmacies, and restaurants. The proximity to golf courses and the highway exit to Alicante Airport ensures easy access to everything you love. This properties are more than a home; it is a lifestyle that embraces natural beauty, modern comfort, and convenience. Exceptional residential is the perfect place to live the life you've always imagined. Welcome to new residential, where each day is a masterpiece of luxury and serenity!



•

•

PROPERTY GALLERY









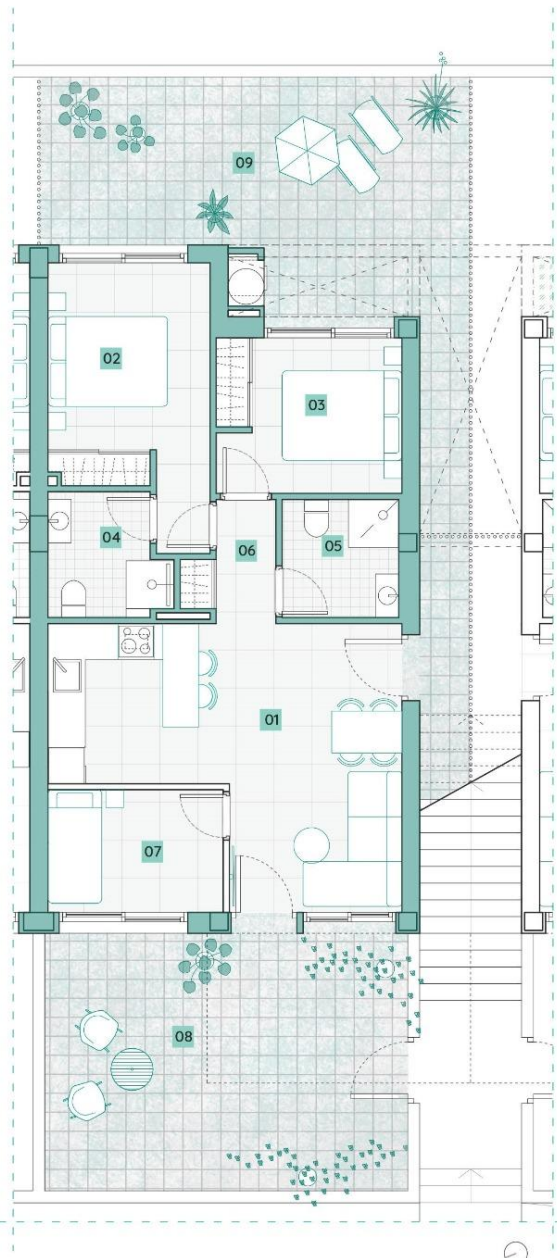












PLANTA BAJA/GROUND FLOOR

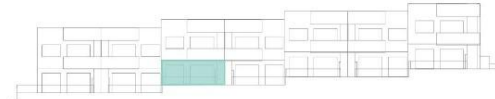
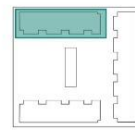
Superficies útiles/Useful surfaces

01	Salón-Comedor-Cocina/Living r.-Kitchen	22,00m ²
02	Dormitorio1/Bedroom1	11,00m ²
03	Dormitorio2/Bedroom2	8,10m ²
04	Baño1/Bathroom1	4,00m ²
05	Baño2/Bathroom2	3,85m ²
06	Distribuidor/Corridor	2,60m ²
07	Despacho/Office	6,00m ²
08	Terraza1/Terrace1	26,00m ²
09	Terraza2/Terrace2	30,00m ²
Sup.útil total PB/GF total useful surface		113,55m ²



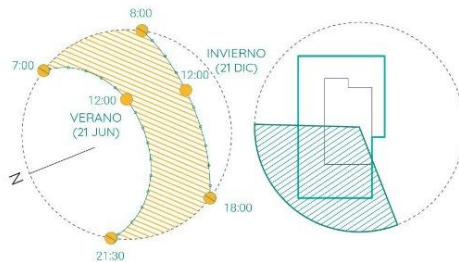
opción 3 dorm

Ubicación en el residencial/
Location in the residential



Estudio de soleamiento/Sunlight study

Análisis de vistas/Views study



RESUMEN DE SUPERFICIES/ SUMMARY OF SURFACES

Superficie útil total/ Total useful surface	57,55m ²
Superficie terrazas/ Terraces area	56,00m ²
Superficie construida/Built area	69,30m ²
Superficie parcela/Plot area	130,00m ²

"OUR EXPERIENCE IS YOUR GUARANTEE"