



REF: # 11373

TORREVIEJA



#### INFO

: 249.000 €

:

: Torrevieja

: 2

: 2

( m2 ): 77

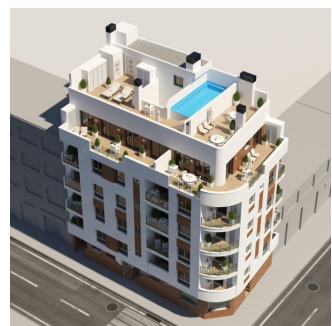
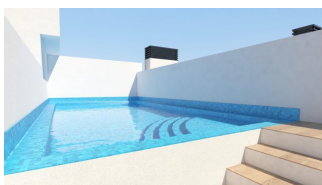
( m2 ): -

( m2 ): 10

:

: -

: -



**NEW BUILD APARTMENTS IN TORREVIEJA** New Build apartments and penthouses in Torrevieja. New Build residential of 17 exclusive 1 and 2 bedrooms, 1 and 2 bathrooms apartments and penthouses, with open plan kitchen and living area, large, fitted wardrobes, fully equipped bathrooms with underfloor heating. All motorised aluminium blinds. Armoured entrance door with security lock. Pre-installation of air conditioning and heating. New Build residential complex with modern design and high quality finishes has a beautiful communal solarium with swimming pool. Torrevieja is a Spanish town in the province of Alicante, on the Costa Blanca. It is known for its typically Mediterranean climate and coastline. It has boardwalks with resorts along its sandy beaches.

The small Museum of the Sea and Salt houses exhibitions on the fishing and salt history of the city. In the interior, the Lagunas de La Mata-Torre Vieja Natural Park has trails and two salty lagoons, one pink and the other green. Alicante airport located 40 minutes away and Murcia airport about 1 hour away



•



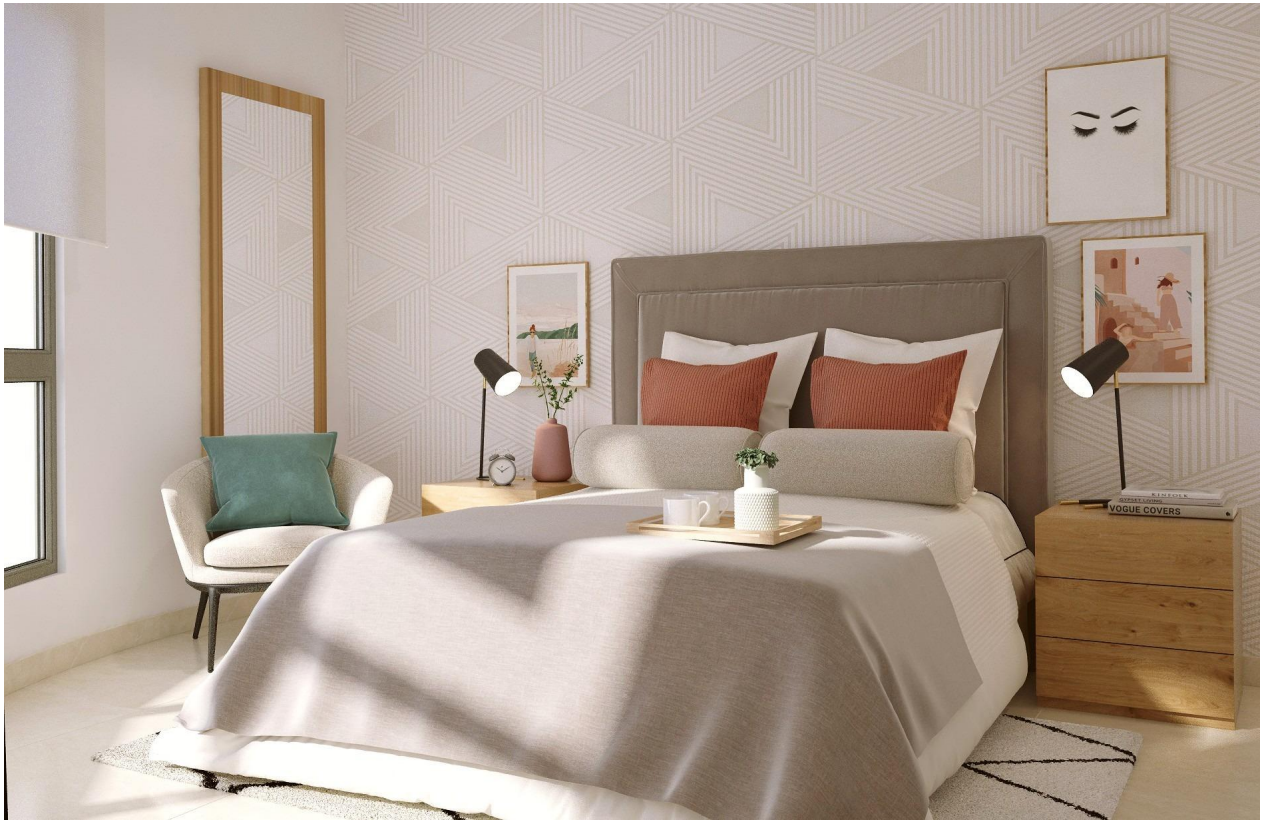






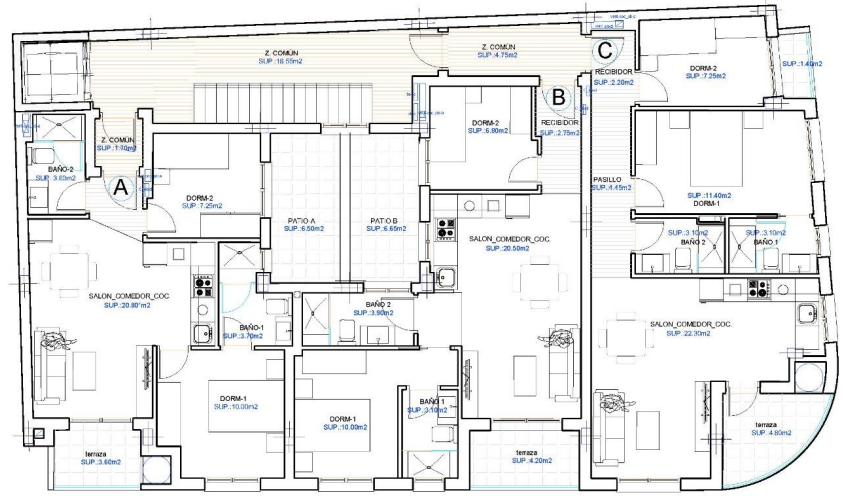








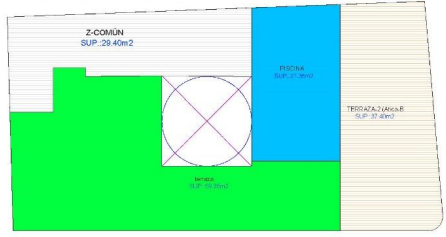




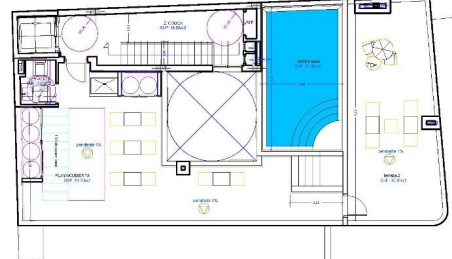
CUADRO DE SUPERFICIES SUPERFICIE VIVIENDA TIPO (PLANTA 1)			
	VIVA-A	VIVA-B	
SALON_COMEDOR_COCINA	20.80 m <sup>2</sup>	20.50 m <sup>2</sup>	
PASILLO/ACCESOPASO	6.00 m <sup>2</sup>	2.75 m <sup>2</sup>	
BAÑO-1	3.70 m <sup>2</sup>	3.10 m <sup>2</sup>	
BAÑO-2	3.80 m <sup>2</sup>	3.90 m <sup>2</sup>	
DORMITORIO-1	10.00 m <sup>2</sup>	10.00 m <sup>2</sup>	
DORMITORIO-2	7.25 m <sup>2</sup>	6.80 m <sup>2</sup>	
TERRAZAS AL 100%	3.80 m <sup>2</sup>	4.20 m <sup>2</sup>	
PATIO AL 100%	7.05 m <sup>2</sup>	7.05 m <sup>2</sup>	
TOT. SUP. UTIL VIVIENDA (Terrazas, patios y galerías al 100%)	56.00 m <sup>2</sup>	58.30 m <sup>2</sup>	
SUP. VIVIENDA CONSTRUIDA (Terrazas, patios y galerías al 100%)	64.75 m <sup>2</sup>	66.60 m <sup>2</sup>	
SUP. CONSTR. E.Comunes	13.00 m <sup>2</sup>	13.87 m <sup>2</sup>	
TOT. SUP. CONSTRUIDA VIVIENDA	77.75 m <sup>2</sup>	80.47 m <sup>2</sup>	

A3-87.80276.70

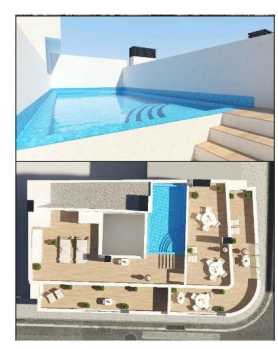
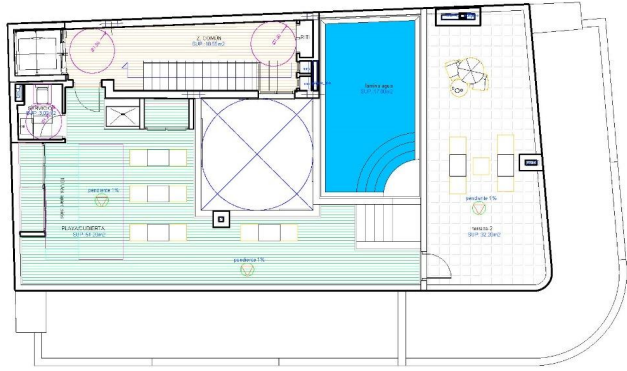
### ESQUEMA SUPERFICIES CONSTRUIDAS PARCIALES



### ESQUEMA DISTRIBUCIÓN



### PLANTA SUPERFICIES ÚTILES PARCIALES.



A3-87.80276.70









***"OUR EXPERIENCE IS YOUR GUARANTEE"***