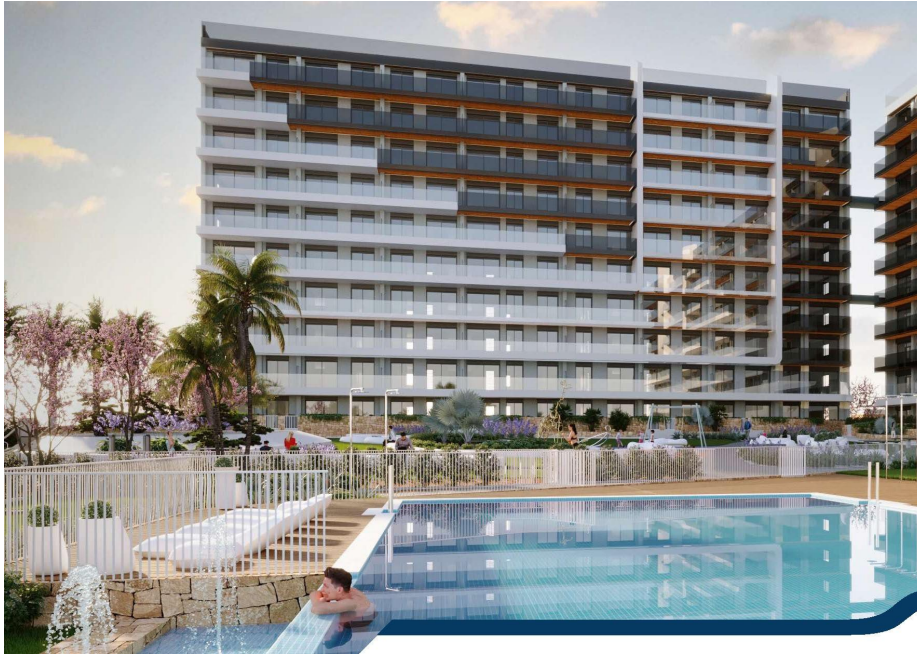




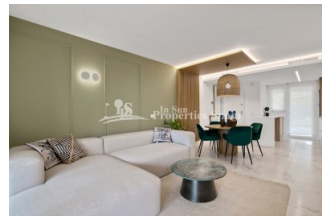
REF: # 10983

TORREVIEJA (PUNTA PRIMA)



INFO

:	364.000 €
:	
:	Torrevieja (Punta Prima)
:	2
:	2
(m2):	64
(m2):	-
(m2):	17
:	
:	1
:	-



NEW BUILD RESIDENTIAL COMPLEX IN PUNTA PRIMA New Build residential complex of 220 apartments in Punta Prima, Torrevieja. Apartments with 2 and 3 bedrooms and 2 bathrooms, open plan kitchen with living room, fitted wardrobes, all of them with large terraces. Ground floor apartments with garden and penthouses with solarium. All homes are delivered with an underground parking space. The residential has garden areas with swimming pools and paddle tennis court. Children can enjoy their own children's pool, as well as a children's play area. Punta Prima, located just 5 km from Torrevieja, is characterized by good communication and health infrastructures, the proximity to Alicante airport, and the number of services open throughout the year. Just 10 km away we can find the golf courses of Villamartín, Campoamor, Las Ramblas, Las Colinas and Lo Romero, as well as the commercial centres of La Zenia and Habaneras.



:

:

: Km

:

: •

EXTRA

•

•

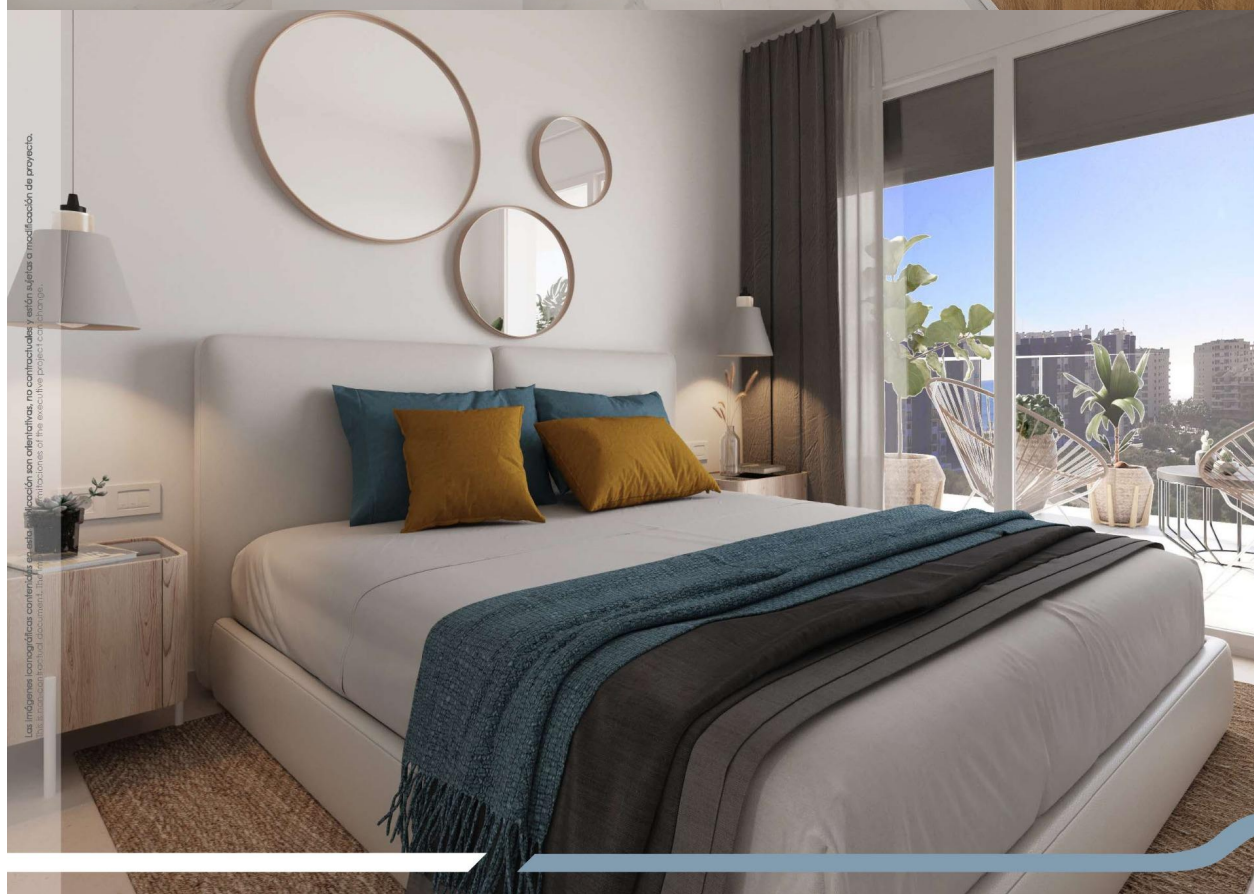
PROPERTY GALLERY







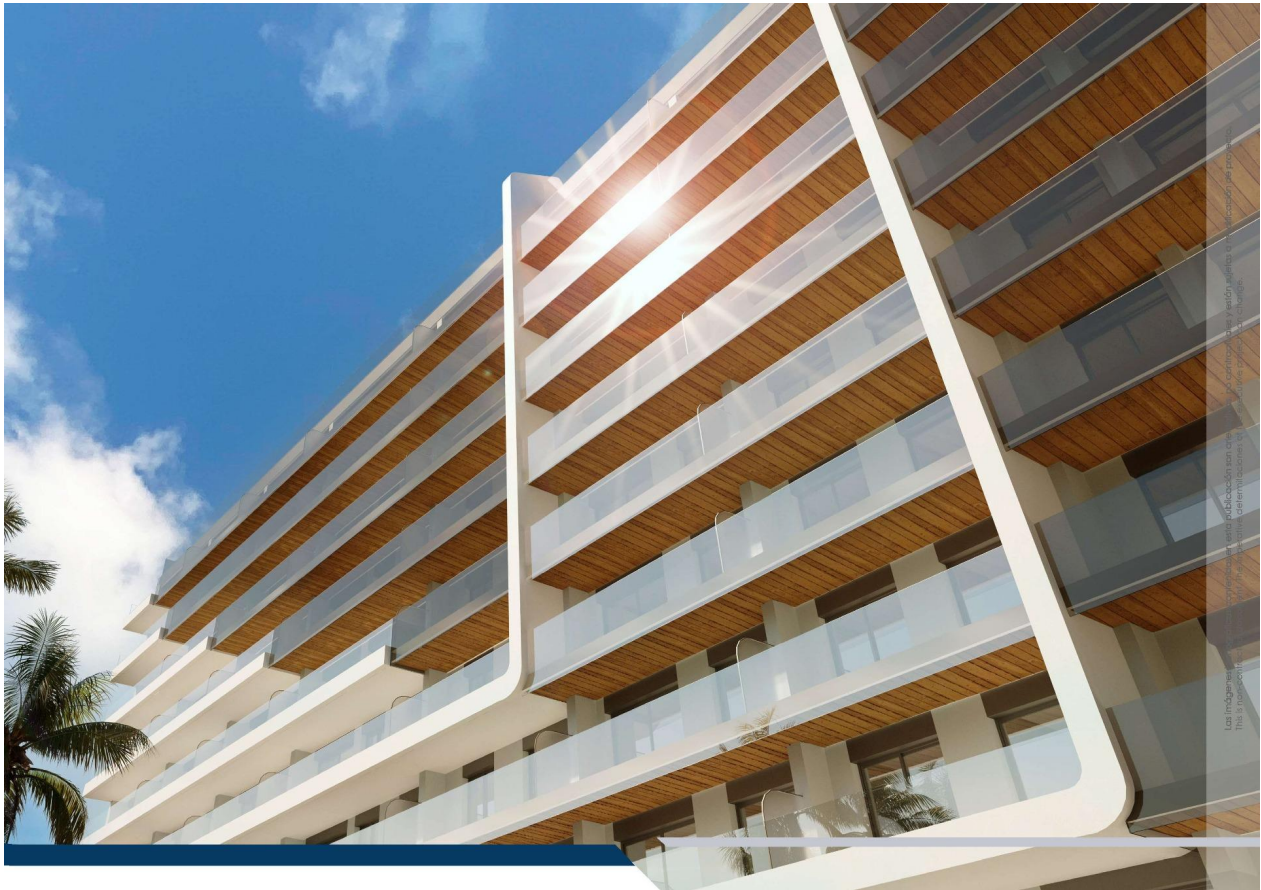








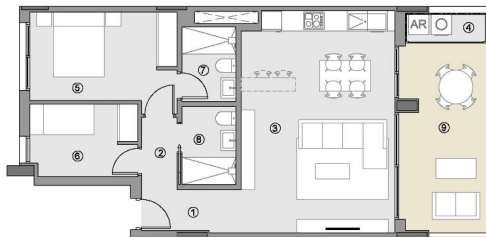




Los planos de este proyecto son de carácter informativo y no deben ser utilizados para la construcción de obras sin la autorización expresa de la firma de arquitectura.

VIVIENDA TIPO 2

ESCALERA 3-5 / STAIRCASE 3-5
PLANTAS 1-8 / FLOORS 1-8



SUPERFICIES ÚTILES / USEFUL AREA

SUPERFICIES ÚTILES INTERIORES / USEFUL INTERIOR AREA	
1 ACCESO / ACCESS	3.41 m²
2 PASO / HALLWAY	2.23 m²
3 ESTAR-COM.-COCINA / KITCHEN/LIVING	29.44 m²
4 TENEDERO (100%) / UTILITY ROOM	2.16 m²
5 DORMITORIO 01 / BEDROOM 01	11.67 m²
6 DORMITORIO 02 / BEDROOM 02	6.72 m²
7 BAÑO 01 / BATHROOM 01	3.52 m²
8 BAÑO 02 / BATHROOM 01	3.68 m²
	63.03 m²

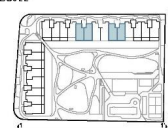
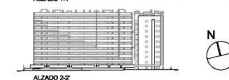
SUPERF. ÚTILES EXTERIORES / USEFUL EXTERIOR AREA

9 TERRAZA 01 (100%) / TERRACE 01	14.72 m²
	14.72 m²

SUP. ÚTIL TOTAL/TOTAL USEFUL AREA 77.75 m²

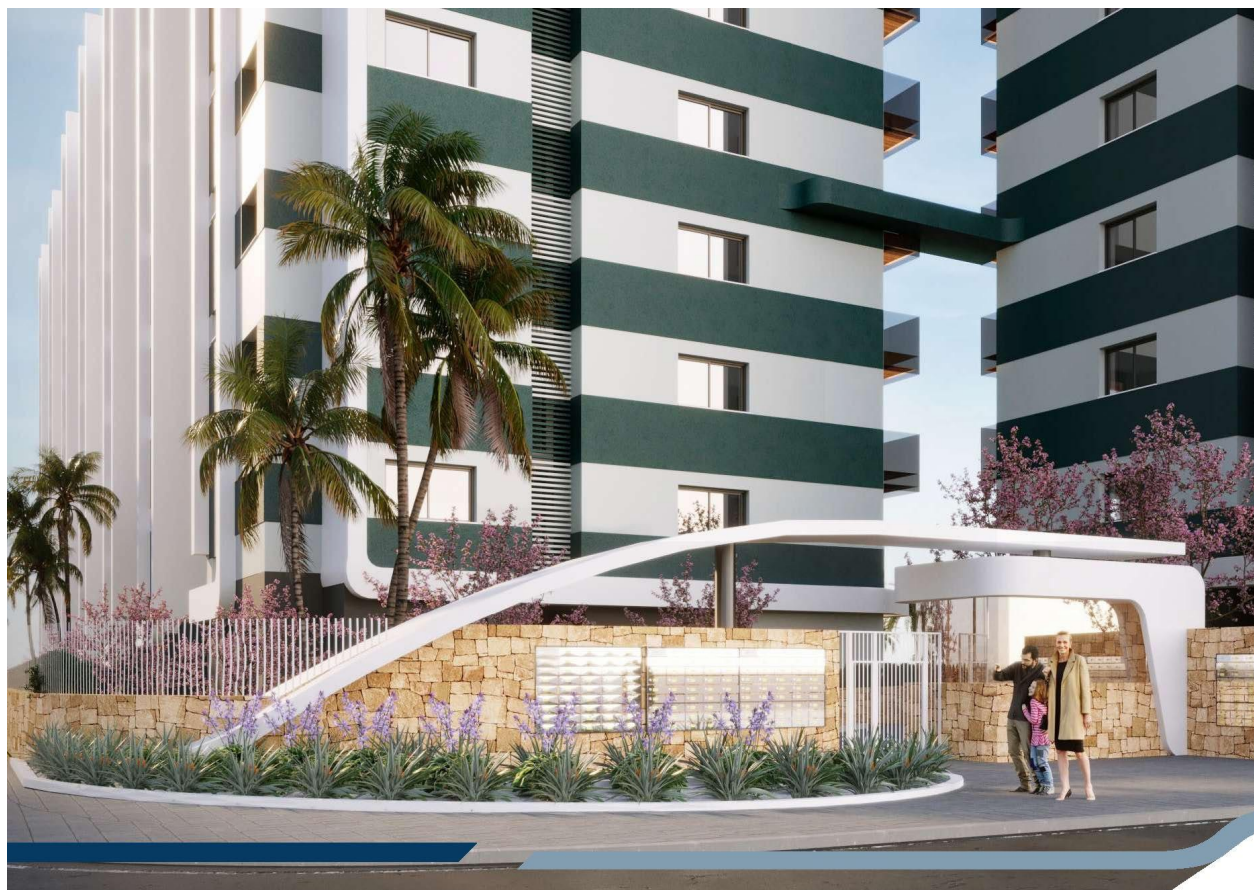
SUPERFIC. CONSTRUIDAS / BUILT AREA

SUP. CONST. INTERIOR / INTERIOR BUILT AREA	70.11 m²
SUP. CONST. EXT. (50%) / EXT. BUILT AREA	8.41 m²
SUP. CONST./C/BUILT AREA OF SHARED AREAS	10.31 m²
SUP. CONST. TOTAL/TOT. BUILT AREA	88.83 m²



0 1 2 3 4 5 m E:1/125

PLANO PROVISIONAL





"OUR EXPERIENCE IS YOUR GUARANTEE"